



冲压模具标准零配件

STAMPING DIE COMPONENTS





东莞市钢锐精密五金有限公司成立于2006年，专业从事高精密模具零配件生产与销售，地处于东莞市横沥镇六甲工业区，交通便利。公司占地6000平方米，建筑面积7000平方米，拥有员工200多名，国内外有多家分公司和销售服务点。

钢锐具有深厚的技术能力,可满足客户的各种需求,多年来钢锐凭借高水准、高素质的研发团队，先进的生产技术，精良的加工设备，精密的检测仪器，完善的质量管理体系(已通过ISO9001:2008质量管理体系认证)，优秀的员工素质，物超所值的产品价格和完善的售后服务体系，在广大客户心中树立了“信誉高、品质精、交期快、服务好”的良好企业形象，赢得了新老客户的信赖和支持，并与一些高品质需求的客户保持着长期的合作。

钢锐致力于发展“全球模具零配件标准化”为愿景，为客户提供一站式采购服务，力争成为高品质精密模具零配件的品牌企业。目前公司可全面提供符合日标JIS标准、德标DIN标准、美标AISI标准等国际品牌的五金模具、塑胶模具等标准零配件。公司产品已遍布全球：美国、德国、英国、法国、意大利、西班牙、日本和韩国等50多个国家和地区。同时钢锐长期为国外模具零配件品牌提供OEM代工服务。



钢锐主要产品：五金模具配件、塑胶模具配件、FA工厂自动化设备零件等，如：凸模凹模、模架用导柱导套、卸料板导柱导套、独立导柱、钢珠衬套(钢珠套保持架)、矩形弹簧、固定座、自润滑板、氮气弹簧、模架、顶针、司筒、镶件以及各种客户非标订制产品等。

钢锐产品服务于：五金冲压模具、塑胶成型模具、半导体封装模具、压铸模具以及航空航天、汽车、机械、机电、电器、电子、医学、文具等多个行业。

钢锐将一直秉承“品质求生存、信誉求发展”的经营理念，热忱欢迎新老朋友莅临指导，携手合作、共创未来。

Dongguan Gunri Precision Hardware Co., Ltd. was founded in 2006, as a professional manufacturer of high quality precision components for molds, dies and machines, with about 7000 square meters covered area and over 200 specialized employees. We have a number of branches at domestic and overseas.

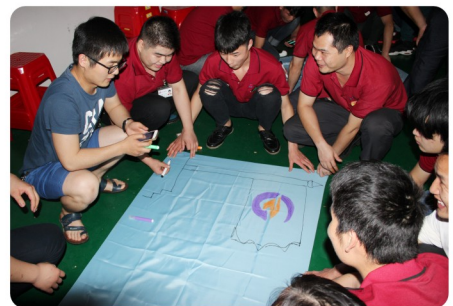
Due to years of experience, high level R&D team, many imported production equipments and measuring instruments, knowledgeable and helpful customer service, and ISO 9001 certificated system (Currently to the ISO9001: 2008 Standard), we've served lots of customers, and established a long term cooperation with most of them. Gunri is committed to improving and developing ourselves to the highest possible level to support industries, meanwhile, earning a good corporate image with high quality products, short delivery time, competitive prices and best service.

We strive to the development of standardization for global mold components and provide one-stop procurement services for customers. Try to make us a famous brand in the high quality precision mold components industry. Till now, our customers are all over more than 50 countries all over the world, such as U.S.A, Britain, France, Italy, Spain, Korea, Japan, etc. Not only can we offer plastic injection, die casting and metal stamping mold components according to international standards, such as, JIS, DIN, AISI. We can also produce as customers' drawings, and provide OEM service for different Brands.

Our main products: Press Die Components, Plastic Mold Components and Automation Components such as punches , die buttons, Ejector Pins ,guide posts and bushings for die sets, stripper guide pins and bushings, holder guide post sets ,ball cages, mold springs, Retainers , Oil-free Slide Plates, gas springs, non-standard core inserts, mold base and other spare parts.

Our products can be seen in various kinds of industries, including metal stamping, plastic injection, Automation, semi-conductor, die casting, electric, automotive, medical, mechanical, aerospace, stationary and so on.

Gunri insists on the principle of "quality for survival, reputation for development", we appreciate your assistant and advice, and looking forward to cooperating with you.





AUTOMATIC LATHES AREA



PRECISION GRINDING MACHINES AREA



PRECISION GRINDING MACHINES AREA



PRECISION GRINDING MACHINES AREA



CNC LATHES AREA



FINISHED WAREHOUSE



PRECISION CNC LATHES



PRECISION CYLINDRICAL GRINDER



PRECISION INTERNAL GRINDER



PRECISION HORIZONTAL HONING MACHINES



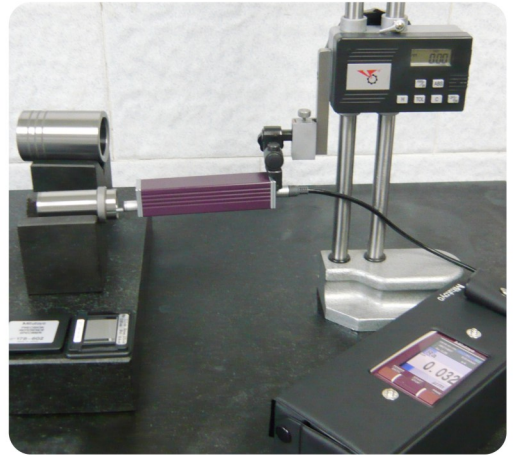
PRECISION CENTERLESS GRINDER



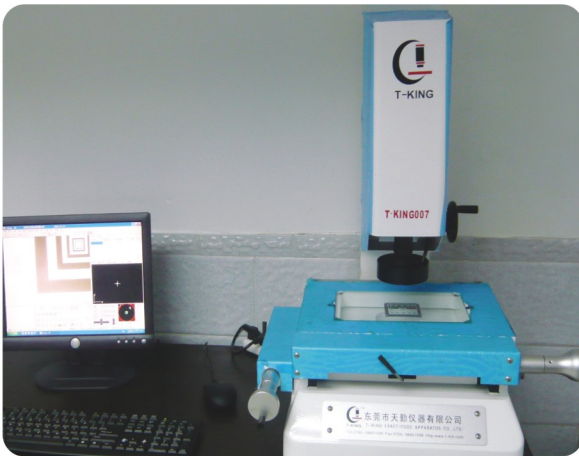
HIGH FREQUENCY QUENCHING INSTRUMENT



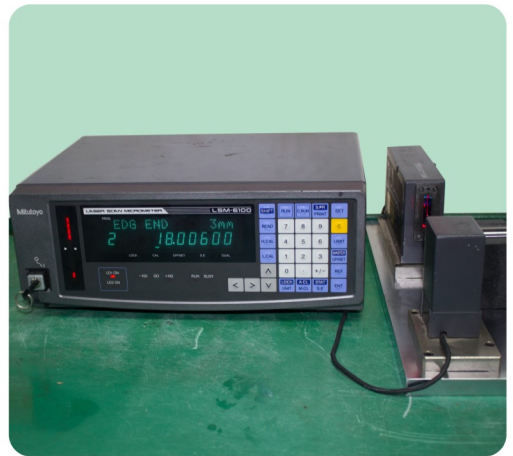
ROUNDNESS INSTRUMENT



SURFACE ROUGHNESS MEASURING INSTRUMENT



2D COORDINATE MEASURING MACHINE



INFRARED DIAMETER MEASURING INSTRUMENT



THREE COORDINATE MEASURING MACHINE



HEIGHT MEASURING INSTRUMENT



STAMPING DIE COMPONENTS

CONTENTS P18~39	CARBIDE BUTTON DIES P330~347	AIISI ATUOMOTIVE PINS & BUSHINGS P530~541	THE CODE INDEX P650~655
HOW TO USE THE CATALOG P40~41	PUNCH&DIES FOR FORMING P348~399	DIN ATUOMOTIVE PINS & BUSHINGS P542~561	ORDER P656~657
PUNCHES P42~143	RETAINERS P400~421	GUIDE COMPONENTS FOR ATUOMOTIVE DIE P562~571	CONTACT P658~659
PILOT PUNCHES P144~189	SMALL PARTS P422~449	OIL-FREE SLIDE PLATES P580~585	
PUNCH GUIDE BUSHINGS P190~199	GUIDE LIFTERS P450~459	COMPONENTS FOR CAM P586~593	
BUTTON DIES P200~237	STRIPPER GUIDE PINS & BUSHINGS P460~495	COIL SPRING P594~603	
CARBIDE PUNCHES P238~295	GUIDE POSTS & BUSHINGS FOR DIE SET P496~513	THE NITROGEN GAS SPRING P604~615	
CARBIDE PILOT PUNCHES P296~329	HOLDER GUIDE POSTS SETS P514~529	TECHNICAL DATA P616~639	

EXPLAIN

All purchases of products from catalogs will be governed by these Terms and Conditions of Sale (the "Terms and Conditions"). All purchasers who utilize the Catalog service (the "Service") must strictly adhere to these Terms and Conditions, unless otherwise set forth in a signed statement by an authorized representative of GUNRI



TERMS AND CONDITIONS OF SALE

Company warrants that the Products shall be free of defects in material and workmanship. During the Warranty Period, the Company at its sole discretion may repair or replace a Product with a defect attributable to the Company ("Defect") free of charge on condition that the customer provides the Company with written notice describing the alleged defect, within the warranty period (defined in the Limited Warranty), and the Company deems the alleged defect covered under this Limited Warranty. Minor flaws such as scratches, marks, dents or discoloration that do not affect the function of the Product do not constitute a Defect, unless the Company, in its sole discretion, deems such flaw to be a Defect.

SCOPE AND PERIOD OF WARRANTY

Within one (1) week of receipt of Product, customer should confirm the name, quantity and specifications of the Product(s) and check for any Defect. The customer must provide written notice to the Company within one (1) week of receipt of Product, or the Company may deem that the Product(s) are free from Defect.

EXCLUSIONS

This Limited Warranty does not cover damages or defects to Products resulting from or in any way contributed to:

- (1) Customer's reckless, negligent or abusive handling or use of the Product.
- (2) Natural disasters including, but not limited to, earthquakes, fires and floods.
- (3) Failure to comply with Product specifications, intended uses, Terms and Conditions, drawings; or documentation shipped with the Product or accessory.
- (4) Any repair, modification, processing or disassembly of the Product.
- (5) Damage to equipment other than the Product itself.
- (6) Use outside of the country where the Company originally shipped the Product at the time of purchase.



FOUR CORE ADVANTAGES

QUALITY

Production and operation of precision mold components in twenty years
strict conform with ISO9001
Full inspection to ensure the quality
Import precision equipment and testing instruments

PRICE

High cost performance. the same quality, we are cheaper
The more you buy, the more discount will be offered.
Various preferential policies

DELIVERY

Fast delivery
Large number of standard parts inventory
express handling channel
Prepare non - standard stock for customers

SERVICE

One-stop procurement service platform
Customized non-standard parts processing, MOQ 1
Free technical consultation,
The branches of the company are all over the world



PRESS DIE COMPONENTS

- M** MATERIAL: SKD11 **H** Hardness: 60~63HRC
- M** Material: SKH51 **H** Hardness: 61~64HRC
- M** Material: SKH40 **H** Hardness: 64~67HRC
- M** Material: V30 **H** Hardness: 88~90HRA
- M** Material: SUPER FINE GRAIN **H** Hardness: 90~92HRA

Materials should be chosen according to the specific usage. Advanced production equipment and precision measuring instruments ensure that products to be high quality and long lasting.



STRIPPER PLAIN GUIDE POSTS & BUSHINGS

- M** Material: SUJ2 **H** Hardness: 58HRC~

With excellent toughness, roughness and wear resistance, tolerances of guide post and guide bushings and strictly controlled within 0.003 mm. Self lubricating bronze plated bushings with graphite (MoS2) are recommended, because of better wear-resistance and longer lifetime.



STRIPPER HIGH-RIGIDITY BALL GUIDE PINS & BUSHINGS

- M** Material: SUJ2 **H** Hardness: 58HRC~

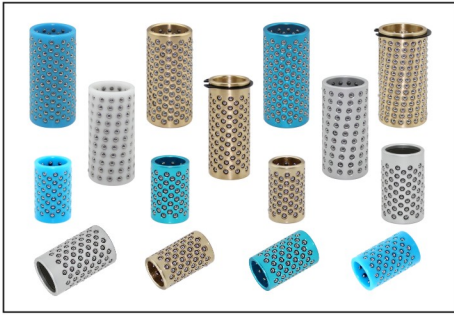
Tolerances are strictly control within 0.003mm, and their toughness, finish and wear resistance are excellent. While working with high rigidity ball cages, the accuracy is higher and the lifetime will be longer.



GUIDE POSTS & BUSHINGS FOR DIE SET

- M** Material: SUJ2 **H** Hardness: 58HRC~

Tolerances to be controlled within 0.003mm, especially the high rigidity guide posts and bushings, the arrangement of high rigidity ball cages is 1.7 times as dense as the standard ones. The point-contact guide post sets with steel balls has been increased by 70%, which makes the lifetime improved effectively.



BALL CAGES

MMaterial: POM 5052S C3604

HHardness: 62~67HRC

Ball cages are with high precision steel balls, and its sphericity reaches to 0.00025mm. Especially, the high rigidity guide post sets, the arrangement of steel balls is 1.7 times the density of standard ones, which improve the lifetime obviously. Because of the interference fit, the installation can be Zero Clearance.



HOLDER GUIDE POSTS SETS

MMaterial: SUJ2

HHardness: 58HRC~

Used for precision molds. High precision and wear resistant ball cages make sure the high requests of molds for guide position while using in combination. The holder type makes it easy to install and adjust molds.



AISI AUTOMOTIVE PINS & BUSHINGS

MMaterial: SUJ2

HHardness: 58HRC~

High quality automotive mold components are produced according to the NAAMS (North American Automotive Metric Standards), not only can perfectly replace the original imported ones, it's also convenient for the replacement of spare parts.



DIN AUTOMOTIVE PILLARS & BUSHES

MMaterial: SUJ2

HHardness: 58HRC~

High quality automotive mould components are produced according to the DIN Automotive Standards, not only can perfectly replace the original imported ones, but also it's convenient for the replacement if spare parts.



OIL-FREE SLIDE PLATE

MMaterial: COPPER ALLOY

Because of the high quality copper alloy and reasonable distribution of graphite, our Oil-free Slide Plate has high oil content and large effective lubrication area, which ensures the wearability and guiding effect of products.



END RETAINER SETS

MMaterial: S45C

Easy to install, easy to replace, convenient mold design. Divided into NC Machining and Edge-matching Machining



COIL SPRINGS

MMaterial: SWOSC-V EQUIVALENT

It can be used up to 1 million times, with high anti fatigue strength, good durability, good quality and high performance price ratio.



GAS SPRINGS

MMaterial: SACM645

Cooperate with European brands, introduce advanced technology, use original imported core seals, optimize structure, ensure product quality and safety, and provide design assistance and on-site installation, after-sales service and technical support.



STANDARD AUTOMATION COMPONENTS

MMaterial: S45C SUJ2 SUS440C ETC.

Advanced production equipment, precision measuring instruments, perfect service network, and provide all kinds of precision Automation Components and services for customers at home and abroad.



NON-STANDARD AUTOMATION COMPONENTS

MMaterial: S45C SUJ2 SUS440C ETC.

Provide customers with a one-stop service from Product design, parts processing, core technology protection.

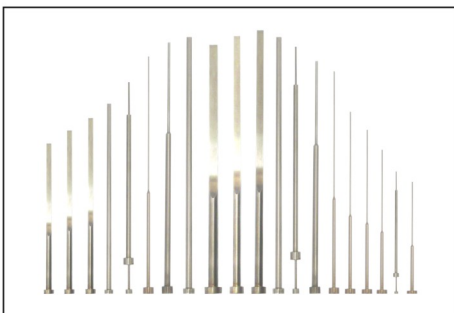


GUIDE POSTS AND BUSHINGS FOR PLASTIC MOLD

MMaterial: SUJ2

HHardness: 58HRC~

use of high-quality materials , high frequency processing, tolerance strictly controlled within 0.005MM。 Toughness, smoothness, wear resistance are very good, very suitable for precision plastic mold



EJECTOR PINS AND EJECTOR SLEEVES FOR PLASTIC MOLD

MMaterial: SKD61

HSurface Hardness: HV900~

HBase Hardness: 40~45HRC

MMaterial: SKH51

HHardness: 59~61HRC

Comprehensive control from material selection to heat treatment and surface treatment, tolerances controled in 0.005MM,they makes the products high hardness, wear resistance, corrosion resistance and high temperature resistance, suitable for precision plastic mold, especially in high temperature environment.

凸模
PUNCHES

NORMAL LAPPING COATING



SHOULDER PUNCHES P.56

NORMAL LAPPING COATING



JECTOR PUNCHES P.59

NORMAL LAPPING COATING



JECTOR PUNCHES
CONFIGURABLE FULL LENGTH, FIXED B TYPE P.62

NORMAL LAPPING COATING



QUILL TYPE SHOULDER PUNCHES P.65

NORMAL LAPPING COATING



SHORT TYPE SHOULDER PUNCHES P.68

NORMAL LAPPING COATING



DOUBLE-STEPPED SHOULDER PUNCHES P.71

NORMAL LAPPING COATING



PUNCHES FOR HEAVY LOAD P.74

NORMAL LAPPING COATING



JECTOR PUNCHES FOR HEAVY LOAD P.77

NORMAL LAPPING COATING



DOUBLE-STEPPED SHOULDER PUNCHES FOR HEAVY LOAD P.80

NORMAL COATING



PUNCHES FOR HEAVY LOAD WITH DOWEL HOLES P.83

NORMAL COATING



JECTOR PUNCHES FOR HEAVY LOAD WITH DOWEL HOLES P.85

NORMAL COATING



PUNCHES WITH DOWEL HOLES P.87

NORMAL COATING



JECTOR PUNCHES WITH DOWEL HOLES P.89

NORMAL LAPPING COATING



TAPPED PUNCHES P.91

NORMAL LAPPING COATING



JECTOR TAPPED PUNCHES P.94

NORMAL LAPPING COATING



DOUBLE-STEPPED TAPPED PUNCHES P.97

NORMAL LAPPING COATING



PUNCHES WITH KEY GROOVES P.100

NORMAL LAPPING COATING



JECTOR PUNCHES WITH KEY GROOVES P. 103

NORMAL LAPPING COATING



FLANGE STOPPER PUNCHES P. 106

NORMAL LAPPING COATING



KEY FLAT SHANK PUNCHES P. 107

NORMAL LAPPING COATING



KEY FLAT SHANK JECTOR PUNCHES P. 110

NORMAL LAPPING COATING



KEY FLAT SHANK TAPPED PUNCHES P. 113

NORMAL LAPPING COATING



STRAIGHT PUNCHES P. 116

NORMAL LAPPING COATING



STRAIGHT PUNCHES FOR HEAVY LOAD P. 119

NORMAL LAPPING COATING



TAPPED STRAIGHT PUNCHES P. 120

NORMAL LAPPING COATING



STRAIGHT JECTOR PUNCHES P. 121



MINI PUNCHES P. 124



STRAIGHT MINI PUNCHES P. 125



PUNCHES BLANKS P. 126



JECTOR PUNCHE BLANKS P. 130



PRECISION PRECISION SHOULDER PUNCHES P. 133



PRECISION PRECISION PUNCHES WITH AIR HOLES P. 134



PRECISION PRECISION PUNCHES WITH KEY GROOVES P. 135



PRECISION PRECISION PUNCHES WITH KEY GROOVES WITH AIR HOLES P. 136



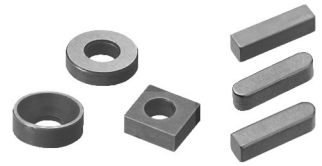
PRECISION PRECISION FLANGE STOPPER PUNCHES P. 137



JECTOR PIN SETS
JECTOR PIN SETS LONG TYPE P.138



PUNCH SPACERS AND SHIMS P.141



FIXING KEYS FOR PUNCHES WITH
KEY GROOVES / KEY FLATS P.142

导正销
PILOT PUNCHES

NORMAL LAPPING COATING



PILOT PUNCHES FOR STRIPPER PLATES P.152

NORMAL LAPPING COATING



STRAIGHT PILOT PUNCHES
FOR STRIPPER PLATES P.155

NORMAL LAPPING COATING



PILOT PUNCHES P.158

NORMAL LAPPING COATING



TAPPED PILOT PUNCHES P.161

NORMAL LAPPING COATING



PILOT PUNCHES WITH KEY GROOVES P.164

NORMAL LAPPING COATING



FLANGE STOPPER PILOT PUNCHES P.173

NORMAL COATING



PILOT PUNCHES WITH
LOCATING DOWEL HOLES P.170

NORMAL COATING



PILOT PUNCHES WITH LOCATING DOWEL
HOLES-PUNCHES CONFIGURABLE SIZE TYPE P.172

NORMAL LAPPING COATING



STRAIGHT PILOT PUNCHES P.173

NORMAL LAPPING COATING



TAPPED STRAIGHT PILOT PUNCHES P.176

NORMAL LAPPING COATING



TAPPED STRAIGHT PILOT PUNCHES P.179

NORMAL LAPPING COATING



STRAIGHT PILOT PUNCHES
WITH KEY GROOVES P.182

NORMAL LAPPING COATING



MOVEABLE TYPE PILOT PUNCHES P.185



ECONOMIC TYPE PILOT PUNCHES P.188



PILOT EJECTOR BUSHINGS P.189

凸模导套
PUNCH GUIDE BUSHINGS



PUNCH GUIDE BUSHINGS -HEADED TYPE P.194



PUNCH GUIDE BUSHINGS -STRAIGHT TYPE P.195



PUNCH GUIDE BUSHINGS -LONG TYPE-HEADED TYPE P.196



PUNCH GUIDE BUSHINGS -LONG TYPE-STRAIGHT TYPE P.197



PUNCH GUIDE BUSHINGS -EXTRALONG TYPE P.198



PUNCH GUIDE BUSHINGS -DOUBLE STEPPED GUIDE TYPE P.199

凹模
BUTTON DIES



ANGULAR BUTTON DIES -HEADED TYPE P.208



SCRAP RETENTION ANGULAR BUTTON DIES -HEADED TYPE P.209



ANGULAR BUTTON DIE-STRAIGHT TYPE P.210



SCRAP RETENTION ANGULAR BUTTON DIES -STRAIGHT TYPE P.211



BUTTON DIES-HEADED REGULAR TYPE P.212



SCRAP RETENTION BUTTON DIES -HEADED REGULAR TYPE P.213



BUTTON DIES -STRAIGHT REGULAR TYPE P.214



SCRAP RETENTION BUTTON DIES -STRAIGHT REGULAR TYPE P.215



BUTTON DIES-HEADED ECONOMY TYPE P.216



SCRAP RETENTION BUTTON DIES -HEADED ECONOMY TYPE P.217



BUTTON DIES-STRAIGHT ECONOMY TYPE P.218



SCRAP RETENTION BUTTON DIES -STRAIGHT ECONOMY TYPE P.219



BUTTON DIES DEEP HOLE TYPE -HEADED /STRAIGHT TYPE P.220



BUTTON DIES CONFIGURABLE FULL LENGTH -HEADED /STRAIGHT TYPE P.222



SCRAP RETENTION BUTTON DIES CONFIGURABLE FULL LENGTH -HEADED /STRAIGHT TYPE P.224



BUTTON DIES CONFIGURABLE SIZE -HEADED /STRAIGHT TYPE P.226



SCRAP RETENTION BUTTON DIES CONFIGURABLE SIZE -HEADED /STRAIGHT TYPE P.228



BUTTON DIES DOWEL SLOT TYPE -REGULAR /ECONOMY TYPE P.230



SCRAP RETENTION BUTTON DIES DOWEL SLOT TYPE-REGULAR /ECONOMY TYPE P.231



BUTTON DIES DOWEL SLOT TYPE -DEEP HOLE TYPE P.232



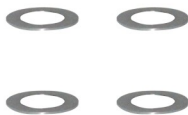
BUTTON DIE BLANKS P.233



PRECISION ANGULAR BUTTON DIE -HEADED /STRAIGHT TYPE P.235



SPACERS FOR ANGULAR BUTTON DIES P.236



SPACERS FOR STRAIGHT BUTTON DIES WITH RELIEF HOLES P.237



COLLARS FOR HEADED BUTTON DIES P.237

硬质合金凸模
CARBIDE PUNCHES

NORMAL LAPPING COATING



SHOULDER CARBIDE PUNCHES P.246

NORMAL LAPPING COATING



CARBIDE SHOULDER PUNCHES WITH AIR HOLES P.249

NORMAL LAPPING COATING



CARBIDE SHOULDER QUILL PUNCHES P.252

NORMAL LAPPING COATING



CARBIDE SHOULDER PUNCHES SHORT TYPE P.255

NORMAL LAPPING COATING



CARBIDE DOUBLE STEPPED PUNCHES P.258

NORMAL LAPPING COATING



CARBIDE TAPPED PUNCHES P.261

NORMAL LAPPING COATING



CARBIDE PUNCHES WITH KEY GROOVES P.264

NORMAL LAPPING COATING



CARBIDE PUNCHES WITH KEY GROOVES-MINUS D TOLERANCE P.267

NORMAL LAPPING COATING



CARBIDE DOUBLE STEPPED PUNCHES WITH KEY GROOVES P.270

NORMAL LAPPING COATING



CARBIDE PUNCHES WITH KEY GROOVES, AIR HOLES P.273

NORMAL LAPPING COATING



CARBIDE PUNCHES WITH KEY GROOVES, AIR HOLES-MINUS D TOLERANCE P.276

NORMAL LAPPING COATING



CARBIDE FLANGE STOPPER PUNCHES P.279

NORMAL LAPPING COATING



CARBIDE KEY FLAT SHANK PUNCHES P.282

NORMAL LAPPING COATING



CARBIDE KEY FLAT SHANK PUNCHES WITH AIR HOLES P.285

NORMAL LAPPING COATING



CARBIDE STRAIGHT PUNCHES P.288

PRECISION SHOULDER CARBIDE PUNCHES P.291

PRECISION SHOULDER PUNCHES WITH AIR HOLES P.291



PRECISION CARBIDE SHOULDER
QUILL PUNCHES P.292



PRECISION CARBIDE FLANGE
STOPPER PUNCHES P.293



PRECISION CARBIDE PUNCHES
WITH KEY GROOVES P.294



PRECISION CARBIDE PUNCHES WITH
KEY GROOVES, AIR HOLES P.295

硬质合金导正销
CARBIDE PILOT PUNCHES

NORMAL LAPPING COATING



CARBIDE PILOT PUNCHES P.304

NORMAL LAPPING COATING



CARBIDE PILOT PUNCHES FOR
STRIPPER PLATES P.307

NORMAL LAPPING COATING



CARBIDE STRAIGHT PILOT PUNCHES
FOR STRIPPER PLATES P.310

NORMAL LAPPING COATING



CARBIDE PILOT PUNCHES P.313

NORMAL LAPPING COATING



CARBIDE PILOT PUNCHES WITH
KEY GROOVES P.316

NORMAL LAPPING COATING



CARBIDE PILOT PUNCHES WITH KEY
GROOVES-MINUS D TOLERANCE P.319

NORMAL LAPPING



CARBIDE STRAIGHT PILOT PUNCHES P.322

NORMAL LAPPING COATING



CARBIDE MOVABLE PILOT PUNCHES P.324

NORMAL LAPPING



PRECISION CARBIDE PILOT PUNCHES
FOR STRIPPER PLATES P.327

NORMAL LAPPING



PRECISION CARBIDE STRAIGHT PILOT
PUNCHES FOR STRIPPER PLATES P.328

NORMAL LAPPING

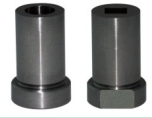


PRECISION PRECISION CARBIDE
PILOT PUNCHES P.329

硬质合金凹模 CARBIDE BUTTON DIES



CARBIDE ANGULAR BUTTON DIES -HEADED TYPE P.336



SCRAP RETENTION CARBIDE ANGULAR BUTTON DIES -HEADED TYPE P.337



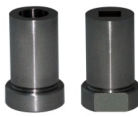
CARBIDE ANGULAR BUTTON DIE -STRAIGHT TYPE P.338



SCRAP RETENTION CARBIDE ANGULAR BUTTON DIES -STRAIGHT TYPE P.339



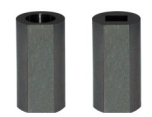
CARBIDE BUTTON DIES-HEADED TYPE P.340



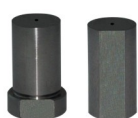
SCRAP RETENTION CARBIDE BUTTON DIES-HEADED TYPE P.341



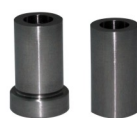
CARBIDE BUTTON DIES -STRAIGHT TYPE P.342



SCRAP RETENTION CARBIDE BUTTON DIES-STRAIGHT TYPE P.343



CARBIDE BUTTON DIE BLANKS P.344



PRECISION CARBIDE ANGULAR BUTTON DIES P.345



PRECISION SCRAP RETENTION CARBIDE ANGULAR BUTTON DIES P.346

成形加工用凸模·凹模 PUNCH & DIES FOR FORMING

NORMAL LAPPING COATING



BURRING PUNCHES P.359

NORMAL LAPPING COATING



BURRING PUNCHES - TIP R TYPE P.360

NORMAL LAPPING COATING



BURRING PUNCHES - TAPERED TIP TYPE P.361

NORMAL LAPPING COATING



BURRING PUNCHES - CONFIGURABLE SIZE TYPE P.362

NORMAL LAPPING COATING



DRAWING BURRING PUNCHES - CONFIGURABLE SIZE TYPE P.365



BURRING DIE UNITS P.368

NORMAL LAPPING COATING



SCRAPLESS BURRING PUNCHES P.369

NORMAL LAPPING COATING



EMBOSSING PUNCHES-SR TYPE P.372

NORMAL LAPPING COATING



EMBOSSING PUNCHES-STEPPED SR TYPE P.373

NORMAL LAPPING COATING



EMBOSSING PUNCHES-STEPPED AND TAPERED TYPE P.374



KNOCKOUT PIN SETS FOR EMBOSSING PUNCHES P.375

NORMAL LAPPING COATING



CHAMFERING PUNCHES-A TYPE P.376

NORMAL LAPPING COATING



CHAMFERING PUNCHES-A TYPE TIP PILOT P.379

NORMAL LAPPING COATING



CHAMFERING PUNCHES-B TYPE P.382

NORMAL LAPPING COATING



CHAMFERING PUNCHES-B TYPE TIP PILOT P.385

NORMAL LAPPING COATING



DRAWING PUNCHES P.390

NORMAL LAPPING COATING



VECTOR DRAWING PUNCHES P.393



DRAWING DIES-LAPPING TYPE P.396



CARBIDE DRAWING DIES-LAPPING TYPE P.397



DRAWING DIES P.398



KNOCKOUT PIN P.399

固定座 RETAINERS



END RETAINER SETS FOR NC MACHINING P.404



END RETAINER SETS FOR NC MACHINING - FOR PUNCHES WITH LOCATING DOWEL HOLES P.405



END RETAINER SETS FOR EDGE -MATCHING MACHINING P.406



TAPPED END RETAINER SETS FOR EDGE -MATCHING MACHINING-FOR PUNCHES P.407



END RETAINER SETS FOR NC MACHINING - FOR HEAVY LOAD PUNCHES P.408



END RETAINER SETS FOR EDGE-MATCHING MACHINING -FOR HEAVY LOAD PUNCHES P.409



END RETAINER SETS FOR NC MACHINING P.410



END RETAINER SETS FOR MANUAL MACHINING P.411



SMALL END RETAINER SETS FOR NC MACHINING-FIXED WITH SINGLE BOLT P.412



SMALL END RETAINER SETS FOR NC MACHINING-BACKING PLUG TYPE P.413



SMALL END RETAINER SETS FOR MANUAL MACHINING-FIXED WITH SINGLE BOLT P.414



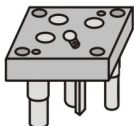
SMALL END RETAINER SETS FOR MANUAL MACHINING-BACKING PLUG TYPE P.415



END RETAINER SETS FOR NC MACHINING -FOR SPECIAL SHAPED PUNCHES AND DIES P.416



SQUARE END RETAINER SETS P.417



SPECIAL END RETAINER SETS-FOR SHOULDER PUNCHES P.418

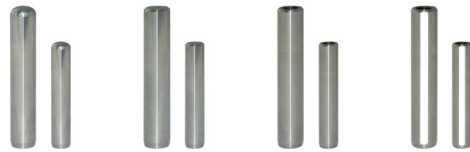


URETHANE STRIPPER UNITS P.420



PROTECTION RINGS FOR URETHANE STRIPPER P.421

小零件
SMALL PARTS



DOWEL PINS

P.422



STEP TYPE-DOWEL PINS

P.424



DOWEL BUSHINGS

P.425



SOCKET HEAD CAP SCREWS

P.426



SPRING WASHERS

P.427



SOCKET HEAD CAP SCREWS WITH
LOOSENING PREVENTION TREATMENT

P.428



SOCKET HEAD CAP SCREWS
-STAINLESS STEEL

P.428



HEX SOCKET HEAD CAP SCREWS

P.429



LOW HEAD HEXAGON SOCKET HEAD
CAP SCREWS

P.430



ULTRA-LOW HEAD HEXAGON SOCKET
HEAD CAP SCREWS

P.430



SCREWS PLUGS

P.431



SCREWS PLUGS-HOLE TYPE

P.432



STRIPPER BOLTS
-MALE THREADSWASHERS

P.433



STRIPPER BOLTS -MALE THREADS

P.434



STROKE EXTENSION RETAINERS FOR
STRIPPER BOLTS

P.434



STRIPPER BOLTS FEMALE THREADS

P.435



STRIPPER BOLTS BUSHING TYPE
-HALF-MADE TYPE P.436



STRIPPER BOLTS BUSHING TYPE
-THICK TYPE P.437



STRIPPER PRESSURE PINS P.438



STRIPPER PRESSURE PINS
LIFTING COLLERS P.439



ADJUSTMENT PINS P.440



PRESSURE PINS P.441



WASHERS/SPACERS P.442



SPRING PLUNGERS P.443



SPRING PLUNGERS P.444



BALL PLUNGERS P.445



STROKE END BLOCKS
-HARDENED TYPE P.446



STROKE END BLOCKS
-HARDENED AND TAPPED TYPE P.447



PRECISION THICKNESS TAPES P.448



DIE ADHESIVE P.449



GUIDE LIFTERS P.449

浮升·导料相关零件
GUIDE LIFTERS



GUIDE LIFTER SETS P.450



GUIDE LIFTERS -REMOVABLE TYPE P.452



GUIDE LIFTERS -SPRING HOLE TYPE- P.452



GUIDE LIFTERS -AIR HOLE TYPE- P.453



GUIDE LIFTERS -HEAVY LOAD TYPE P.453



LIFTER PIN SETS P.454



LIFTER PIN SETS-WITH PILOT PUNCH RELIEF HOLES P.456



MAGNET LIFTER PINS P.458



LIFTER PINS WITH AIR HOLE P.458



LIFTER PINS -SPRING HOLE TYPE- P.459



LIFTER PIN SETS -WITH SPRING HOLE TYPE WITH PILOT PUNCH RELIEF HOLE P.459

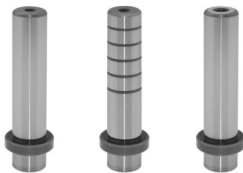
卸料板滑动导柱·导套
STRIPPER PLAIN GUIDE PINS & GUIDE BUSHINGS



STRIPPER GUIDE PINS -HEAD TYPE P.464



STRIPPER GUIDE PINS -STRAIGHT TYPE P.465



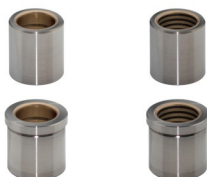
STRIPPER GUIDE PINS -DETACHABLE TYPE P.466



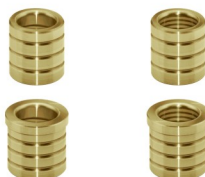
STRIPPER GUIDE BUSHINGS-OIL TYPE P.467



STRIPPER GUIDE BUSHINGS -OIL-FREE TYPE P.468



STRIPPER GUIDE BUSHINGS (COPPER ALLOY) -OIL/OIL-FREE TYPE P.468



STRIPPER GUIDE BUSHINGS (COPPER) -OIL/OIL-FREE TYPE P.469



PRECISION STRIPPER GUIDE PINS -0.003MM P.470



PRECISION STRIPPER GUIDE BUSHINGS (0.003MM) OIL/OIL-FREE TYPE P.471



PRECISION STRIPPER GUIDE BUSHINGS (COPPER ALLOY) (0.003MM) OIL/OIL-FREE TYPE P.472



PRECISION STRIPPER GUIDE BUSHINGS (COPPER) (0.003MM) OIL/OIL-FREE TYPE P.473



PRECISION STRIPPER GUIDE PINS (0.002MM) P.476



PRECISION STRIPPER GUIDE BUSHINGS (0.002MM) OIL/OIL-FREE TYPE P.477



PRECISION STRIPPER GUIDE BUSHINGS (COPPER ALLOY) (0.002MM) OIL/OIL-FREE TYPE P.478



PRECISION STRIPPER GUIDE BUSHINGS (COPPER) (0.002MM) OIL/OIL-FREE TYPE P.479



STRIPPER GUIDE PINS - CARBIDE P.480



STRIPPER GUIDE PINS - HARD CHROMIUM P.481



COPPER ALLOY GUIDE BUSHINGS P.481



PRECISION OIL-FREE TYPE COPPER ALLOY GUIDE BUSHINGS P.481

卸料板高刚性
钢球导柱组件
STRIPPER HIGH-RIGIDITY BALL
GUIDE PINS & GUIDE BUSHINGS



BALL BEARING STRIPPER GUIDE PIN SETS - STRAIGHT TYPE P.482



BALL BEARING STRIPPER GUIDE PIN SETS - STRAIGHT TYPE P.482



BALL BEARING STRIPPER GUIDE PIN SETS - STRAIGHT TYPE P.482



BALL BEARING STRIPPER GUIDE PIN SETS - FLANGED TYPE P.483



BALL BEARING STRIPPER GUIDE PIN SETS - FLANGED TYPE P.483



BALL BEARING STRIPPER GUIDE PIN SETS - FLANGED TYPE P.483



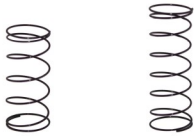
STRIPPER GUIDE PINS P.484



STRIPPER GUIDE BUSHINGS P.485



BALL CAGES FOR STRIPPER GUIDE PINS P.486



SPRINGS FOR STRIPPER GUIDE PINS P.486



FIXED STOPPER/CLAMPS FOR STRIPPER GUIDE PINS P.487



STRIPPER GUIDE BUSHINGS -INTEGRATED BALL CAGE P.488



HIGH RIGIDITY BALL BEARING STRIPPER GUIDE PIN SETS P.489



STRIPPER GUIDE PINS P.490



STRIPPER GUIDE PINS P.491



BALL CAGES FOR STRIPPER GUIDE PINS P.492



STRIPPER GUIDE BUSHINGS P.493



MINIATURE BALL BEARING GUIDE SETS P.494-495



MINIATURE BALL RETAINER P.494-495



MINIATURE BALL BEARING GUIDE PINS AND BUSHINGS P.494-495

模架用导向组件
GUIDE POSTS & BUSHINGS FOR DIE SET



BALL GUIDE POST SETS FOR DIE SETS - DETACHABLE POST TYPE-HIGH RIGIDITY TYPE P.498



BALL GUIDE POST SETS FOR DIE SETS - DETACHABLE POST TYPE-HIGH RIGIDITY TYPE P.498



BALL GUIDE POST SETS FOR DIE SETS - DETACHABLE POST TYPE-HIGH RIGIDITY TYPE P.498



BALL GUIDE POST SETS FOR DIE SETS
-DETACHABLE POST TYPE-NORMAL TYPE P.498



BALL GUIDE POST SETS FOR DIE SETS
-DETACHABLE POST TYPE-NORMAL TYPE P.498



BALL GUIDE POST SETS FOR DIE SETS
-DETACHABLE POST TYPE-NORMAL TYPE P.498



BALL GUIDE POST SETS FOR DIE SETS
-PRESS-FIT POST TYPE-HIGH RIGIDITY TYPE P.500



BALL GUIDE POST SETS FOR DIE SETS
-PRESS-FIT POST TYPE-HIGH RIGIDITY TYPE P.500



BALL GUIDE POST SETS FOR DIE SETS
-PRESS-FIT POST TYPE-HIGH RIGIDITY TYPE P.500



BALL GUIDE POST SETS FOR DIE SETS
-PRESS-FIT POST TYPE-NORMAL TYPE P.500



BALL GUIDE POST SETS FOR DIE SETS
-PRESS-FIT POST TYPE-NORMAL TYPE P.500



BALL GUIDE POST SETS FOR DIE SETS
-PRESS-FIT POST TYPE-NORMAL TYPE P.500



PLAIN GUIDE POST SETS FOR DIE SETS
-DETACHABLE POST TYPE P.502



PLAIN GUIDE POST SETS FOR DIE SETS
-PRESS-FIT POST TYPE P.503



GUIDE POST FOR DIE SETS
-DETACHABLE POST TYPE P.504



GUIDE POST FOR DIE SETS
-PRESS-FIT POST TYPE P.504



LONG TYPE GUIDE POST FOR DIE SETS
-DETACHABLE POST TYPE P.506



LONG TYPE GUIDE POST FOR DIE SETS
-PRESS-FIT POST TYPE P.506



BALL GUIDE BUSHINGS FOR DIE SETS
-NORMAL/LONG TYPE P.508



BALL GUIDE BUSHINGS FOR DIE SETS
-DETACHABLE POST TYPE P.509



BALL GUIDE BUSHINGS FOR THE LOWER DIE SETS/SPRINGS P.510

钢球导柱用挡块/弹簧/钢球套护圈



BALL CAGES FOR DIE SETS -HIGH RIGIDITY TYPE P.511



BALL CAGES FOR DIE SETS -NORMAL TYPE P.511



STOPPER/SPRINGS/RINGS FOR STRIPPER GUIDE PINS P.512



PLAIN GUIDE BUSHINGS FOR DIE SETS P.513

独立导柱组件
HOLDER GUIDE POSTS SETS



PLAIN HOLDER GUIDE POST SETS P.518



BALL HOLDER GUIDE POST SETS -MOVABLE STOPPER P.520



BALL HOLDER GUIDE POST SETS -FIXED STOPPER P.522



BALL HOLDER GUIDE POST SETS -MOVABLE STOPPER-HIGH RIGIDITY TYPE P.524



GUIDE POST SETS/GUIDE HOLDERS /GUIDE BUSHINGS P.526



BALL CAGES FOR HOLDER GUIDE POST SETS-HIGH RIGIDITY/NORMAL TYPE P.528



STOPPER/SPRINGS FOR HOLDE GUIDE POST SETS P.528



GUIDE POST SETS FOR MOTOR MOLD P.529

美标汽车模用导柱·导套
AISI AUTOMOTIVE PINS & BUSHINGS



AUTOMOTIVE GUIDE PILLARS P.530



AUTOMOTIVE GUIDE BUSHES P.532



AUTOMOTIVE GUIDE BUSHES P.534



AUTOMOTIVE GUIDE BUSHES P.535



AUTOMOTIVE GUIDE BUSHES P.536



AUTOMOTIVE BALL BEARING CAGES/GUIDE BUSHES P.537



AUTOMOTIVE BALL BEARING CAGES P.538



AUTOMOTIVE GUIDE BUSHES P.539

德标汽车模用导柱·导套
DIN AUTOMOTIVE PINS & BUSHINGS



AUTOMOTIVE GUIDE PILLARS P.542



AUTOMOTIVE GUIDE PILLARS P.543



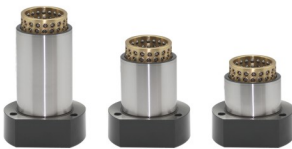
AUTOMOTIVE BALL BEARING CAGES (BALL CAGES) P.545



AUTOMOTIVE BALL GUIDE BUSHES P.546



AUTOMOTIVE BALL GUIDE BUSHES P.547



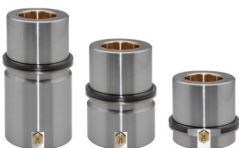
AUTOMOTIVE BALL GUIDE BUSHES P.548



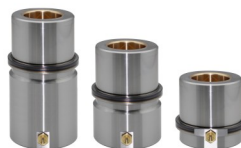
AUTOMOTIVE BALL GUIDE BUSHES P.549



AUTOMOTIVE GUIDE BUSHES P.550



AUTOMOTIVE COPPER ALLOY GUIDE BUSHES P.551



AUTOMOTIVE COPPER ALLOY GUIDE BUSHES P.552



AUTOMOTIVE COPPER GUIDE BUSHES P.553



AUTOMOTIVE COPPER GUIDE BUSHES P.554



AUTOMOTIVE COPPER GUIDE BUSHES -OIL FREE TYPE P.555



AUTOMOTIVE COPPER GUIDE BUSHES -OIL FREE TYPE P.556



AUTOMOTIVE COPPER GUIDE BUSHES -OIL FREE TYPE P.557



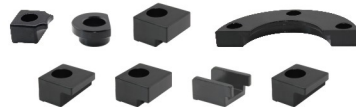
AUTOMOTIVE GUIDE BUSHES P.558



AUTOMOTIVE GUIDE BUSHES P.559

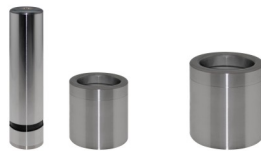


COMPONENTS FOR AUTOMOBILE DIES P.560



COMPONENTS FOR AUTOMOBILE DIES P.561

汽车模具用导向零件
GUIDE COMPONENTS
FOR AUTOMOTIVE DIE



OIL FREE GUIDE POST SETS PRESS -FIT POST TYPE P.562



GUIDE POSTS P.564



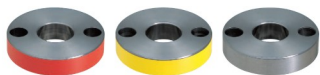
OIL FREE GUIDE BUSHES STRAIGHT HEADED TYPE P.565



GUIDE POSTS /LOCKING STOPPERS FOR GUIDE POSTS P.566



STROKE END BLOCKS P.567



LOCKING END BLOCKS FOR GUIDE BUSHES P.568



BALL GUIDE POST SETS P.569



DISTANCE GUIDE RINGS P.571



OIL-FREE HEEL GUIDE PLATES P.572



HEEL GUIDE PLATES WITH OIL GROOVES P.573



OIL-FREE HEEL GUIDE PLATES P.574



HEEL GUIDE PLATES WITH OIL GROOVES P.575

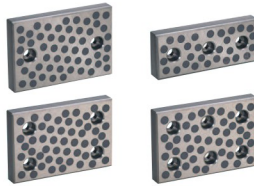


URETHANE STOCK BLOCK SETS P.576

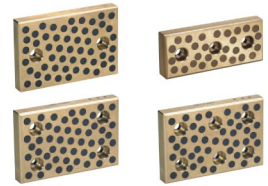


STROKE END PIPES/URETHANE STOCK BLOCKS P.578

自润滑板及斜楔零件
OIL-FREE SLIDE PLATES
& COMPONENTS FOR CAM



OIL-FREE SLIDE PLATES-CAST 20MM TYPE P.580



OIL-FREE SLIDE PLATES-COPPER ALLOY 20MM TYPE P.581



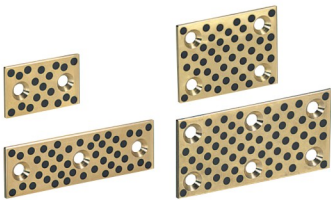
OIL-FREE SLIDE PLATES-COPPER ALLOY 10MM TYPE P.582



SHIMS FOR OIL-FREE SLIDE PLATES P.583



COMPACT OIL-FREE SLIDE PLATES-COPPER ALLOY 10MM TYPE P.584



OIL-FREE THIN SLIDE PLATES-COPPER ALLOY 5MM TYPE P.585



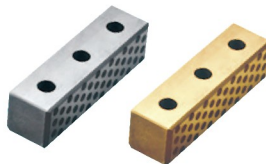
CAM SLIDE PLATES P.586



CAM SLIDE BLOCKS P.587



CAM UPPER PLATES P.588



CAM SIDE BLOCKS P.589



CAM STROKE PLATES-30° TYPE P.590



CAM STROKE PLATES-15° TYPE P.591



CAM BOTTOM GUIDE /SLIDE PARTS P.592



CAM POSITIVE RETURN FOLLOWERS P.593

矩形弹簧
COIL SPRING



COIL SPRINGS -MINIMAL LOAD-GTF P.594



COIL SPRINGS -LOAD-GTL P.596



COIL SPRINGS -MEDIUM LOAD-GTM P.598



COIL SPRINGS -HEAVY LOAD-GTH P.600



COIL SPRINGS -EXTRA HEAVY LOAD-GTB P.602

氮气弹簧
THE NITROGEN GAS SPRING



NITROGEN GAS SPRINGS-GX TYPE P.604



NITROGEN GAS SPRINGS-GTU TYPE P.606



NITROGEN GAS SPRINGS-GXG TYPE P.608



NITROGEN GAS SPRINGS-GR TYPE P.610



NITROGEN GAS SPRINGS-GM TYPE P.610



NITROGEN GAS SPRINGS-GMC TYPE P.610



NITROGEN GAS SPRINGS-GCU TYPE P.612



NITROGEN GAS PLATE P.614



DONGGUAN GUNRI PRECISION HARDWARE CO., LTD. (HEADQUARTERS)

Add.: No. 6, Zhenxing Rd., Liujia Industrial Zone, Hengli Town, Dongguan, Guangdong, China

<https://grmold.com/>

WhatsApp
+8618929233070

Email Address
milla@gunri.com.cn

GUNLE GMBH

Add.: Sonnenberg Services, Sternstrasse 67, 40479, Duesseldorf, Germany

Tel: +49 211 16746953

FAX: +49 211 16746953

GETS MEDS PTE LTD

Add.: Blk 9012 #04-187, Tampines Street 93 Singapore, 528845

Tel: +65-6444 2518

FAX: +65 6444 2528

GETS MEDS SDN BHD

Add.: No.6 Jalan Setia Tropika 1/1, Taman Setia Tropika 81200, Johor Bahru, Malaysia

Tel: +60 7 235 6466

FAX: +60 7 235 7466